

N22000.0/E12500.0

N22500.0/E16000.0

N21500.0/E15500.0

N21000.0/E13000.0

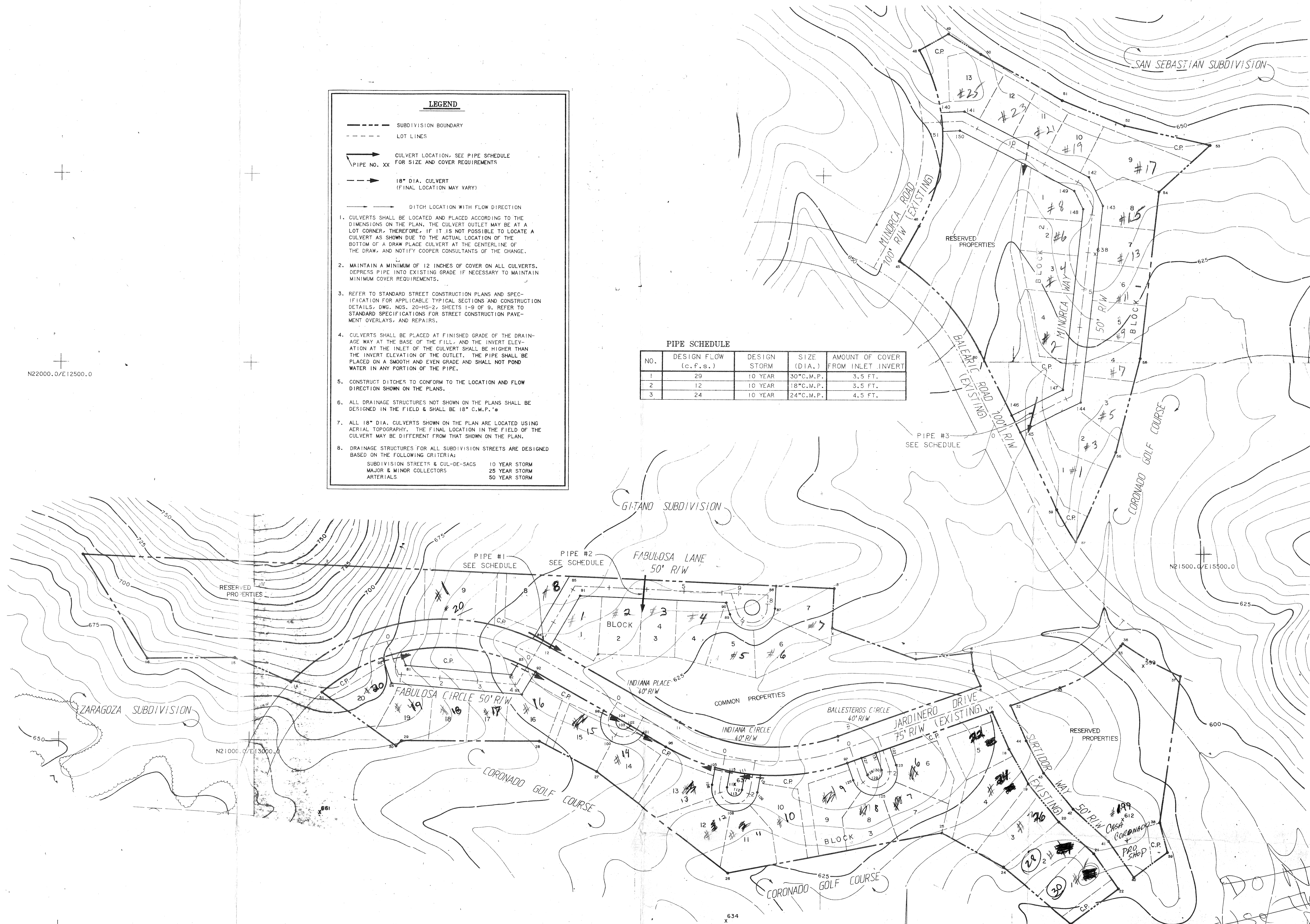
### LEGEND

- SUBDIVISION BOUNDARY
- LOT LINES
- CULVERT LOCATION, SEE PIPE SCHEDULE FOR SIZE AND COVER REQUIREMENTS
- 18" DIA. CULVERT (FINAL LOCATION MAY VARY)
- DITCH LOCATION WITH FLOW DIRECTION

1. CULVERTS SHALL BE LOCATED AND PLACED ACCORDING TO THE DIMENSIONS ON THE PLAN. THE CULVERT OUTLET MAY BE AT A LOT CORNER, THEREFORE, IF IT IS NOT POSSIBLE TO LOCATE A CULVERT AS SHOWN DUE TO THE ACTUAL LOCATION OF THE BOTTOM OF A DRAIN PLACE CULVERT AT THE CENTERLINE OF THE DRAIN, AND NOTIFY COOPER CONSULTANTS OF THE CHANGE.
2. MAINTAIN A MINIMUM OF 12 INCHES OF COVER ON ALL CULVERTS. DEPRESS PIPE INTO EXISTING GRADE IF NECESSARY TO MAINTAIN MINIMUM COVER REQUIREMENTS.
3. REFER TO STANDARD STREET CONSTRUCTION PLANS AND SPECIFICATION FOR APPLICABLE TYPICAL SECTIONS AND CONSTRUCTION DETAILS. DWS. NOS. 20-HS-2, SHEETS 1-9 OF 9, REFER TO STANDARD SPECIFICATIONS FOR STREET CONSTRUCTION PAYMENT OVERLAYS, AND REPAIRS.
4. CULVERTS SHALL BE PLACED AT FINISHED GRADE OF THE DRAINAGE WAY AT THE BASE OF THE FILL, AND THE INVERT ELEVATION AT THE INLET OF THE CULVERT SHALL BE HIGHER THAN THE INVERT ELEVATION OF THE OUTLET. THE PIPE SHALL BE PLACED ON A SMOOTH AND EVEN GRADE AND SHALL NOT POND WATER IN ANY PORTION OF THE PIPE.
5. CONSTRUCT DITCHES TO CONFORM TO THE LOCATION AND FLOW DIRECTION SHOWN ON THE PLANS.
6. ALL DRAINAGE STRUCTURES NOT SHOWN ON THE PLANS SHALL BE DESIGNED IN THE FIELD & SHALL BE 18" C.M.P.'s
7. ALL 18" DIA. CULVERTS SHOWN ON THE PLAN ARE LOCATED USING AERIAL TOPOGRAPHY. THE FINAL LOCATION IN THE FIELD OF THE CULVERT MAY BE DIFFERENT FROM THAT SHOWN ON THE PLAN.
8. DRAINAGE STRUCTURES FOR ALL SUBDIVISION STREETS ARE DESIGNED BASED ON THE FOLLOWING CRITERIA:
  - SUBDIVISION STREETS & CUL-DE-SACS 10 YEAR STORM
  - MAJOR & MINOR COLLECTORS 25 YEAR STORM
  - ARTERIALS 50 YEAR STORM

### PIPE SCHEDULE

NO.	DESIGN FLOW (c.f.s.)	DESIGN STORM	SIZE (DIA.)	AMOUNT OF COVER FROM INLET INVERT
1	29	10 YEAR	30" C.M.P.	3.5 FT.
2	12	10 YEAR	18" C.M.P.	3.5 FT.
3	24	10 YEAR	24" C.M.P.	4.5 FT.



0 100 200  
GRAPHIC SCALE IN FEET

REVISION NUMBER	BY	DATE	REVISION DESCRIPTION	BY	DATE	APPROVED
			PRELIMINARY SUBDIVISION DRAINAGE PLAN	SCALE: 1"=100'		
			BALLESTEROS SUBDIVISION	DRAWN: FLS DATE: 12/86		
			BLOCKS 1 - 4	CHECKED: JAN DATE: 12/31/86		
			HOT SPRINGS VILLAGE, ARKANSAS	APPROVED: DATE: 1/1/87		
			COOPER CONSULTANTS	FILE NO. 4-116-86-2169		
			1 CARLISLE DRIVE BELLA VISTA, ARKANSAS 72714	JOB NO. 4-116-86-2169		
				SHEET 1 OF 1		