

COOPER COMMUNITIES, INC., HEREINAFTER REFERRED TO AS DEVELOPER, (FORMERLY NAMED COOPER ACQUISITION CORPORATION AND SUCCESSOR IN INTEREST TO THE PREDECESSOR COOPER COMMUNITIES, INC. AND JOHN A. COOPER COMPANY BY REASON OF MERGERS, THE SAID JOHN A. COOPER COMPANY FORMERLY BEING NAMED CHEROKEE VILLAGE DEVELOPMENT COMPANY, INC.) IS THE OWNER OF ALL REAL ESTATE REFLECTED BY THIS PLAT AND THE PLAT IS FILED FOR RECORD AND RECORDED SUBJECT TO THE FOLLOWING PROVISIONS:

- DATED THIS 1 DAY OF Dec, 1982

COOPER COMMUNITIES, INC.

BY John A. [Signature]
PRESIDENT

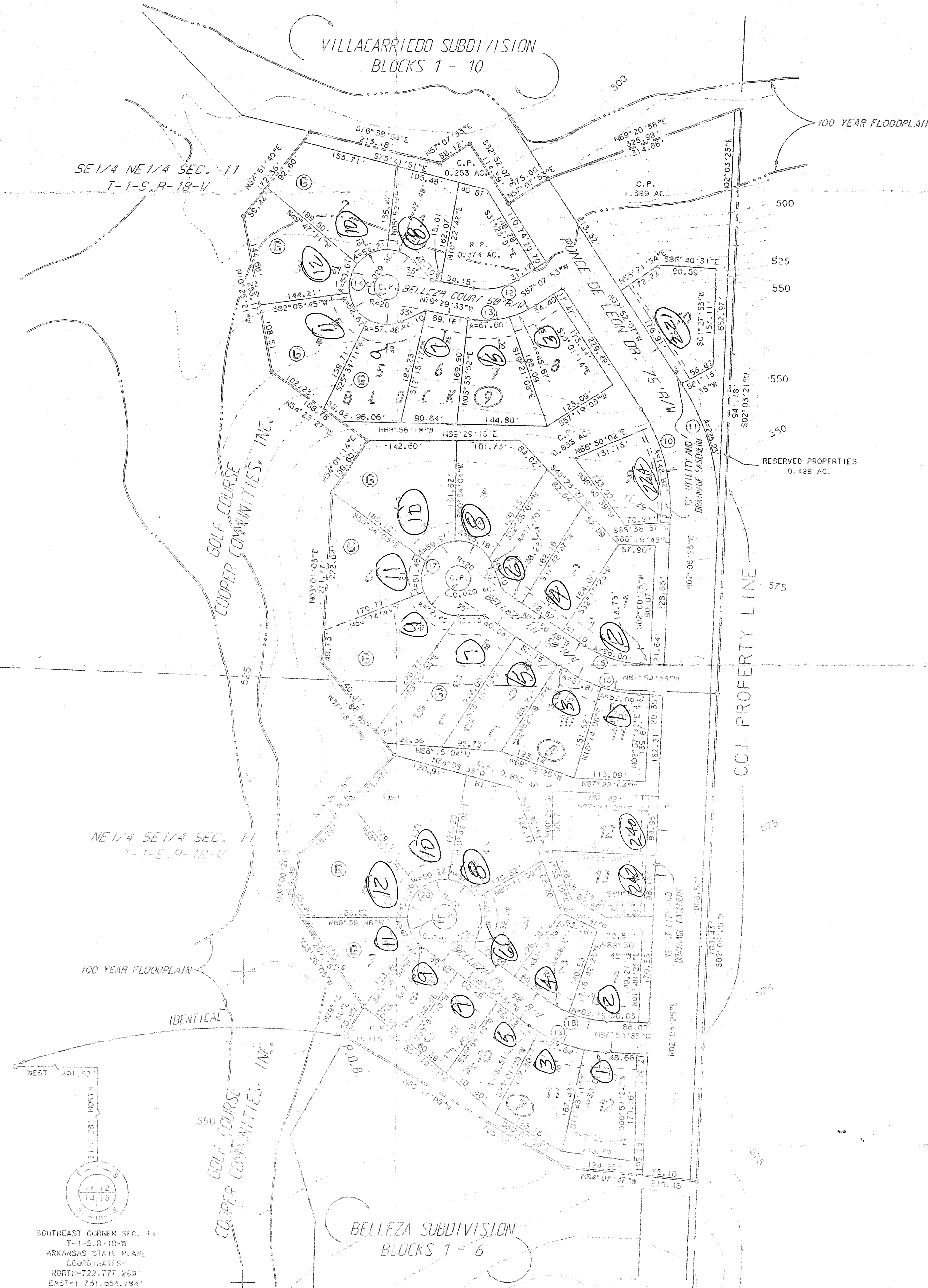
CERTIFICATE OF FINAL APPROVAL

PURSUANT TO THE SALINE COUNTY RULES AND REGULATIONS, THIS DOCUMENT WAS GIVEN APPROVAL BY THE SALINE COUNTY PLANNING BOARD OR ITS REPRESENTATIVE, ALL THE CONDITIONS OF APPROVAL HAVING BEEN COMPLETED, THIS DOCUMENT IS HEREBY ACCEPTED AND THIS CERTIFICATE IS EXECUTED UNDER AUTHORITY OF SAID RULES AND REGULATIONS.

DATE OF EXECUTION

BY

TITLE _____
SALINE COUNTY PLANNING BOARD



SOUTHEAST CORNER SEC. 1
T-1-S, R-18-W
ARKANSAS STATE PLANE
COORDINATES:
NORTH=722,777.269'
EAST=1,731,654.784'

CURVE NO.	CURVE DATA				
	RADIUS	ARC	DELTA	CHORD	CHORD BEARING
10	294.15	170.47	034°57'31"	175.70	H 15°23'21" W
11	369.15	225.23	043°57'31"	221.78	H 15°23'21" W
12	90.12	75.79	052°57'31"	69.73	H 15°23'21" W
13	149.62	113.27	043°22'34"	110.53	S 76°49'40" E
14	60.00	264.80	250°00'00"	98.30	S 10°40'32" W
15	172.15	98.80	051°57'47"	94.76	S 71°55'42" W
16	222.09	123.00	051°57'47"	122.30	S 71°55'42" W
17	60.00	264.80	250°00'00"	98.30	S 34°03'11" W
18	171.41	101.55	053°56'39"	90.77	N 70°58'16" E
19	221.10	131.00	053°56'39"	129.59	N 70°58'16" E
20	60.00	264.80	250°00'00"	98.30	N 71°02'04" E

BLOCK 7		BLOCK 8		BLOCK 9	
LOT 1	0.307 AC.	LOT 1	0.431 AC.	LOT 1	0.332 AC.
LOT 2	0.257 AC.	LOT 2	0.315 AC.	LOT 2	0.562 AC.
LOT 3	0.347 AC.	LOT 3	0.541 AC.	LOT 3	0.473 AC.
LOT 4	0.563 AC.	LOT 4	0.458 AC.	LOT 4	0.481 AC.
LOT 5	0.563 AC.	LOT 5	0.458 AC.	LOT 5	0.411 AC.
LOT 6	0.552 AC.	LOT 6	0.480 AC.	LOT 6	0.322 AC.
LOT 7	0.328 AC.	LOT 7	0.574 AC.	LOT 7	0.414 AC.
LOT 8	0.258 AC.	LOT 8	0.537 AC.	LOT 8	0.408 AC.
LOT 9	0.258 AC.	LOT 9	0.537 AC.	LOT 9	0.450 AC.
LOT 10	0.299 AC.	LOT 10	0.357 AC.	LOT 10	0.347 AC.
LOT 11	0.352 AC.	LOT 11	0.512 AC.	TOTAL	4.160 AC.
LOT 12	0.306 AC.	LOT 12	0.363 AC.		
TOTAL	4.342 AC.	LOT 13	0.316 AC.		

TOTAL AREA	
LOTTED AREA	13.938 AC.
RESERVED PROPERTIES	0.802 AC.
COMMON PROPERTIES	5.634 AC.
STREETS	4.582 AC.
TOTAL	22.956 AC.

LENGTH OF RECORDED STREETS	
40 FOOT RIGHT-OF-WAY	324 LINEAL FEET
50 FOOT RIGHT-OF-WAY	1088 LINEAL FEET
75 FOOT RIGHT-OF-WAY	1657 LINEAL FEET

LEGAL DESCRIPTION
BELLEZA SUBDIVISION
BLOCKS 7 - 9

A PARCEL OF LAND LYING IN THE NE 1/4 OF THE SE 1/4 (9.544 ACRES ±), IN THE SE 1/4 OF THE NE 1/4 (113.412 ACRES ±) OF SECTION 11, TOWNSHIP 1 SOUTH, RANGE 18 WEST OF THE FIFTH PRINCIPAL MERIDIAN, SALINE COUNTY, ARKANSAS, BEING MORE PARTICULARLY DESCRIBED AS FOLLOWS:

SECTION	AUT A	POINT	2118.28	FEET	NORTH	AND	401.52	FEET	WEST
CORNER OF SAID SECTION 11 (ARUNASAS STATE PLANE COORDINATES OF NORTH: 72,777.2030 FEET AND EAST: 73,737.0574 FEET) THEREIN, S 72° 26' 27" E 159.55 FEET THEREIN, S 108° 10' 20" E 204.15 FEET THEREIN, S 72° 26' 27" E 189.65 FEET THEREIN, S 40° 41' 14" E 100.60 FEET THEREIN, S 72° 26' 27" E 258.15 FEET THEREIN, S 78° 58' 54" E 213.18 FEET THEREIN, S 32° 52' 07" E 114.59 FEET THEREIN, S 69° 30' 38" E 325.36 FEET THEREIN, S 72° 26' 27" E 240.30 FEET THEREIN, S 72° 26' 27" E 240.30 FEET									

LAND SURVEYOR'S CERTIFICATION

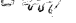

I HEREBY CERTIFY THAT THE HEREIN PLATTED AND DESCRIBED SURVEY WAS COMPLETED UNDER MY SUPERVISION ON THE 7TH DAY OF Dec, 1989, AND THAT CORNERS WERE SET, AS SHOWN, TO THE BEST OF MY KNOWLEDGE AND ABILITY.

THE SURVEY WAS MADE BY THE FOLLOWING PERSONS AND THE DATE WHEN THE SURVEY WAS MADE IS SET FORTH IN THE FIRST COLUMN OF THE FOLLOWING TABLE. THE SURVEY WAS MADE BY THE FOLLOWING PERSONS AND THE DATE WHEN THE SURVEY WAS MADE IS SET FORTH IN THE FIRST COLUMN OF THE FOLLOWING TABLE. THEREFORE, WITHIN ONE YEAR FROM DATE HEREON, AND AS TO OTHERS, TO CORRECT THE ACCURACY OF SAID SURVEY AND MAP.

HAROLD E. HENRY, R.L.S., NO. 691, ARKANSAS

THE SCALE OF THIS DRAWING WHEN REDUCED TO A SIZE OF 11" X 17" IS 1"=300'

Address Copy

2. RECORD NUMBER 3. BY 4. DATE		REVISION DESCRIPTION		5. BY 6. DATE 7. CHECKED 8. APPROVED	
		RECORD PLAT		SCALE: 1" = 100'	
		BELLEZA SUBDIVISION BLOCKS 7 - 9 HOT SPRINGS VILLAGE, ARKANSAS		DRAWN: WRS DATE: 11/78 CHECKED: JDF DATE: 12/69 APPROVED:  DATE: 12/69 FILE NO: 4-116-50	
		COOPER CONSULTANTS 1 CARLISLE DRIVE BELLA VISTA, ARKANSAS 72714		DWS NO. 4-116-102-2287 JGD NO. FILED IN: SHEET 1 OF	