

Table with 5 columns: BLOCK, LOT, ACRES, CURVE, CHORD. Contains lot area data for Block 1 and Block 2.

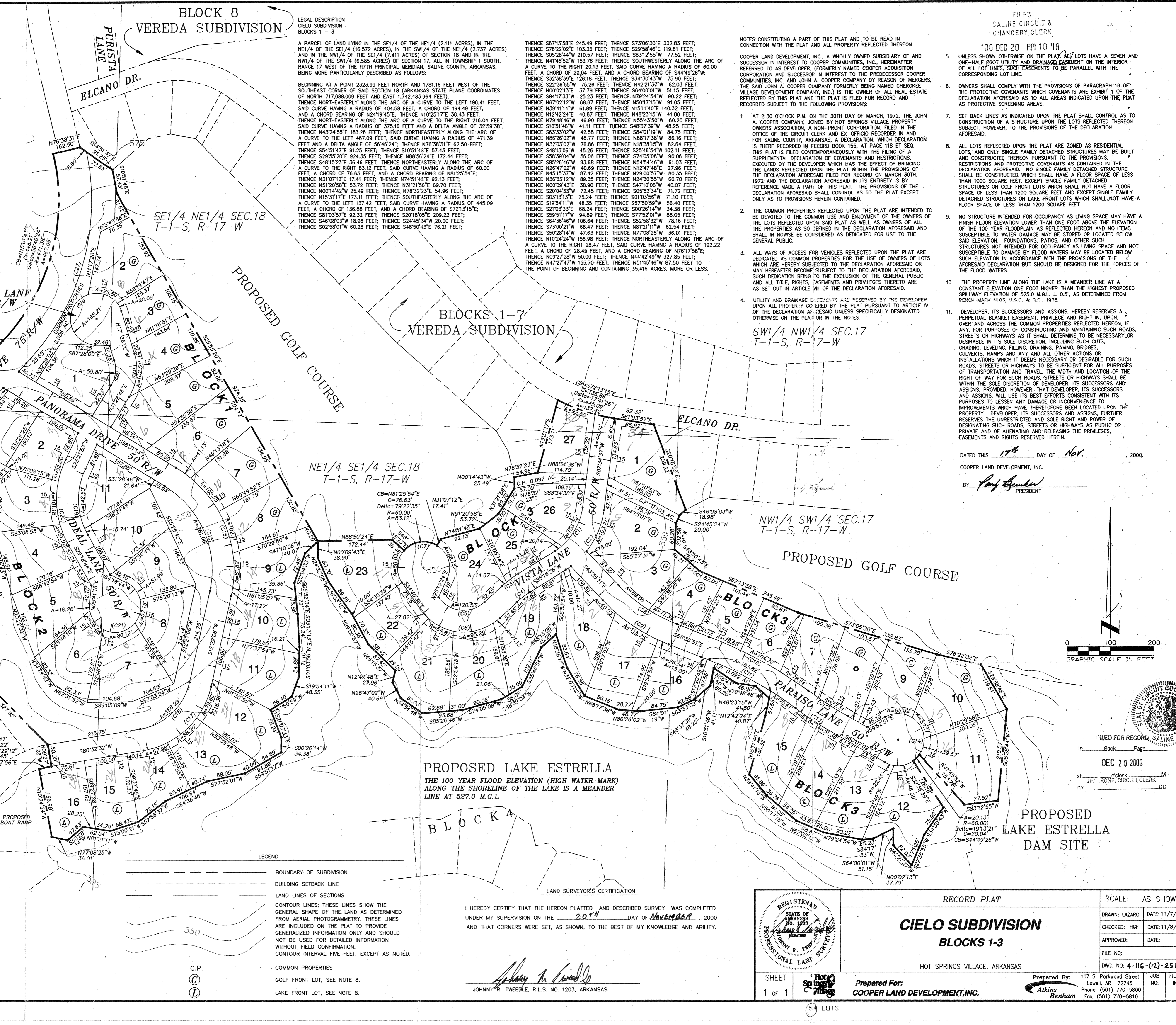
Table with 2 columns: CURVE, CHORD. Contains curve and chord data for Block 1 and Block 2.

Table with 2 columns: CURVE, CHORD. Contains curve and chord data for Block 1 and Block 2.

Table with 2 columns: CURVE, CHORD. Contains curve and chord data for Block 1 and Block 2.

Table with 2 columns: CURVE, CHORD. Contains curve and chord data for Block 1 and Block 2.

Table with 2 columns: CURVE, CHORD. Contains curve and chord data for Block 1 and Block 2.



NOTES CONSTITUTING A PART OF THIS PLAT AND TO BE READ IN CONNECTION WITH THE PLAT AND ALL PROPERTY REFLECTED THEREON. COOPER LAND DEVELOPMENT, INC., A WHOLLY OWNED SUBSIDIARY OF AND SUCCESSOR IN INTEREST TO COOPER COMMUNITIES, INC., HERINAFTER REFERRED TO AS DEVELOPER, FORMERLY NAMED COOPER ACQUISITION CORPORATION AND SUCCESSOR IN INTEREST TO THE PREDECESSOR COOPER COMMUNITIES, INC. AND JOHN A. COOPER COMPANY BY REASON OF MERGERS, THE SAID JOHN A. COOPER COMPANY FORMERLY NAMED CHEROKEE VILLAGE DEVELOPMENT COMPANY, INC. IS THE OWNER OF ALL REAL ESTATE REFLECTED BY THIS PLAT AND THE PLAT IS FILED FOR RECORD AND RECORDED SUBJECT TO THE FOLLOWING PROVISIONS:

RECORD PLAT. CIELO SUBDIVISION. BLOCKS 1-3. SCALE: AS SHOWN. DRAWN: LAZARO. DATE: 11/7/00. CHECKED: HGF. DATE: 11/8/00. APPROVED: DATE: FILE NO: DWG. NO: 4-116-(12)-2510. SHEET 1 of 1. Prepared For: COOPER LAND DEVELOPMENT, INC. Prepared By: Atkins Benham. 117 S. Parkway Street, Lowell, AR 72745. Phone: (501) 770-5800. Fax: (501) 770-5810.