

John A. Cooper Company, hereinafter referred to as Developer, is the owner of all real estate reflected by this Plat; and the Plat is filed for record and recorded subject to the following provisions:

- Dated this 14 day of OCT, 1970.

I hereby certify that the Plat shown and reflected hereon is a true and accurate survey and that the corners and monuments have been set as shown.

Dated this 31 day of JULY, 1970

James F. Gore R.L.S. No. 93

PASO SUBDIVISION
BLOCK I

A parcel of land lying in Lot 1, NW⁴, (51.00 AC.±); in Lot 1, NE⁴, (0.76 AC.±); in Lot 2 NW⁴, (0.09 AC.±); in Lot 3, NW⁴, (4.75 AC.±) of Section 4, T-1-S, R-19-W of the Fifth Principal Meridian, Garland County, Arkansas, being more particularly described as follows:

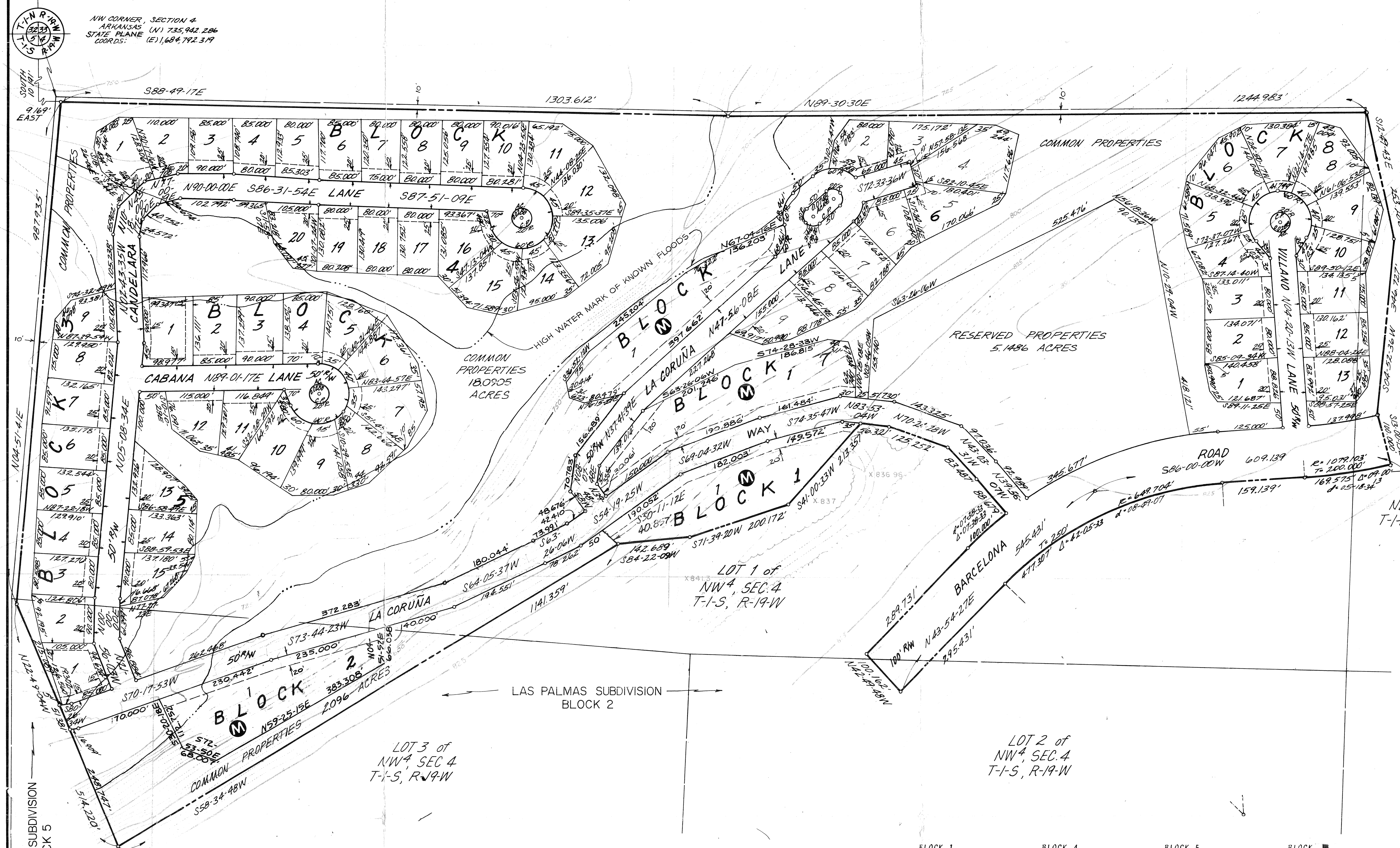
Commencing at the NW corner of Section 4, T-1-S, R-19-W of the Fifth Principal Meridian, Garland County, Arkansas, [State Plane Coordinates north 735, 942, 286, east 1, 684, 792, 319] run south 10.191' to a point; thence run east 9.169' to a point of beginning; thence run S88°49'17"E 1303.612' to a point; thence run N89°30'30"E 1244.983' to a point; thence run S12°49'43"E 253.286' to a point; thence run S04°52'36"W 346.727' to a point; thence run S13°00'51"E 100.000' to a point on a curve; thence run southwesterly along a curve to the right 169.575' to a point of tangency, said curve having a degree of curvature of 5°18'34" and a chord of S81°29'53"W 169.400'; thence run S86°00'00"W 159.139' to a point of curvature; thence run southwesterly along a curve to the left 477.307' to a point of tangency, said curve having a degree of curvature of 8°49'07" and a chord of S64°57'13"E 466.645'; thence run S43°54'27"W 295.431' to a point; thence run N45°49'48"W 100.162' to a point; thence run N43°54'27"E 259.731' to a point of curvature; thence run northeasterly along a curve to the right 100.000' to a point, said curve having a degree of curvature of 7°58'31" and a chord of N43°43'43"E 99.999'; thence run N45°49'48"W 100.162' to a point of tangency; thence run S31°13'43"E 83.487' to a point; thence run N70°24'16"W 125.252' to a point; thence run N83°53'54"W 56.321' to a point; thence run S41°00'35"W 213.357' to a point; thence run S71°39'20"W 200.172' to a point; thence run S84°32'09"W 142.689' to a point; thence run S58°34'48"W 1141.359' to a point; thence run N22°49'04"W 514.220' to a point; thence run N04°51'41"E 987.935' to a point of beginning and containing a total of 56.6003 Acres.

THE SCALE OF THIS PLAT WHEN REDUCED TO A SIZE OF 11" X 17" IS 1" = 300'

LA CORUÑA SUBDIVISION
BLOCKS 1 - R INCLUSIVE

REVISIONS		
DATE	BY	DESCRIPTION
7-23-70	775	M L 275
DRAWN: 874		
DATE: 7-20-70		BHE 10
CHECKED: 875		
DATE: 7-30-70		DWG. 8-11-70
JOB NO.		
ENG. &		
SCA		
775		

A north arrow pointing upwards, labeled with a large 'N'. Below the arrow is a graphic scale bar with alternating black and white segments. The scale is marked in feet: 100, 50, 25, 0, 50, 100, 200.



LEGEND:

_____ LAND LINES OF SECTIONS
 ----- BOUNDARY OF SUBDIVISION
 - - - - - BUILDING SETBACK LINE
 ~~~~~ HIGHWATER LINE OF KNOWN MAXIMUM FLOOD  
 \_\_\_\_\_ CONTOUR LINES: THESE LINES SHOW THE GENERAL SHAPE OF THE  
 LAND AS DETERMINED FROM AERIAL PHOTOGRAMMETRY. THESE  
 LINES ARE ON THE PLAT TO PROVIDE GENERALIZED  
 INFORMATION ONLY, AND SHOULD NOT BE USED FOR DETAILED  
 INFORMATION WITHOUT FIELD CONFIRMATION. CONTOUR INTERVAL  
 \_\_\_\_\_ FEET

| BLOCK 1 |              | BLOCK 4 |              | BLOCK 5 |              | BLOCK 6 |              |
|---------|--------------|---------|--------------|---------|--------------|---------|--------------|
| Loz No. | Area Sq. Ft. | Loz No. | Area Sq. Ft. | Loz No. | Area Sq. Ft. | Loz No. | Area Sq. Ft. |
| 1       |              | 3       | 9527.176     | 8       | 11920.251    |         | 12816.88     |
|         |              | 4       | 9124.547     | 9       | 12916.250    |         | 10994.69     |
|         |              | 5       | 9510.714     | 10      | 12792.901    |         | 10273.16     |
|         |              | 6       | 10095.369    | 11      | 10691.040    |         | 10634.52     |
|         |              | 7       | 9401.434     | 12      | 10968.126    |         | 12300.95     |
| BLOCK 2 |              | 8       | 9901.235     | 13      | 10856.445    |         |              |
|         |              | 9       | 10101.890    | 14      | 11556.915    |         |              |
| 1       |              | 10      | 10970.533    | 15      | 10800.857    |         |              |
|         |              | 11      | 12364.451    |         |              |         |              |
|         |              | 12      | 13184.613    |         |              |         |              |
|         |              | 13      | 13454.930    |         |              |         |              |
| BLOCK 3 |              | 14      | 9897.331     |         |              |         |              |
|         |              | 15      | 13193.360    |         |              |         |              |
| 1       | 11335.841    | 16      | 12354.431    |         |              |         |              |
| 2       | 10661.961    | 17      | 10471.040    |         |              | BLOCK 7 |              |
| 3       | 10114.033    | 18      | 10444.415    |         |              | 1       | 11116.76     |
| 4       | 10924.568    | 19      | 10431.331    |         |              | 2       | 11309.18     |
| 5       | 11148.524    | 20      | 10835.868    |         |              | 3       | 10578.78     |
| 6       | 11372.481    |         |              |         |              | 4       | 10740.18     |
| 7       | 11785.449    | BLOCK 5 |              | BLOCK 6 |              | 5       | 11699.75     |
| 8       | 10277.380    |         |              |         |              | 6       | 13543.29     |
| 9       | 12255.145    | 1       | 13146.665    |         |              | 7       | 13416.86     |
|         |              | 2       | 11616.127    |         |              | 8       | 13560.93     |
| BLOCK 4 |              | 3       | 12409.460    |         |              | 9       | 12560.17     |
|         |              | 4       | 11477.306    |         |              | 10      | 10128.25     |
| 1       | 11330.053    | 5       | 10908.016    |         |              | 11      | 10886.76     |
| 2       | 10074.157    | 6       | 12964.516    |         |              | 12      | 10986.07     |
|         |              | 7       | 13544.475    |         |              |         |              |
|         |              | 8       | 10874.175    |         |              |         |              |
|         |              | 9       | 10874.175    |         |              |         |              |
|         |              | 10      | 10874.175    |         |              |         |              |
|         |              | 11      | 10874.175    |         |              |         |              |
|         |              | 12      | 10874.175    |         |              |         |              |
|         |              | 13      | 10874.175    |         |              |         |              |
|         |              | 14      | 10874.175    |         |              |         |              |
|         |              | 15      | 10874.175    |         |              |         |              |
|         |              | 16      | 10874.175    |         |              |         |              |
|         |              | 17      | 10874.175    |         |              |         |              |
|         |              | 18      | 10874.175    |         |              |         |              |
|         |              | 19      | 10874.175    |         |              |         |              |
|         |              | 20      | 10874.175    |         |              |         |              |