

OF APRIL, 1970, THE
ILLAGE PROPERTY OWNERS
, FILED IN THE OFFICE OF
ORDER IN AND FOR GARLAND
CH DECLARATION IS THERE
369, ET SEQ. THIS PLAT
ILING OF A SUPPLEMENTAL
CTIONS, EXECUTED BY THE
OF BRINGING THE LANDS
HE PROVISIONS OF THE
RD ON APRIL 20TH, 1970,
ION FILED FOR RECORD ON
NTIRETY IS BY REFERENCE
IONS OF THE DECLARATION
PLAT EXCEPT ONLY AS TO

THE PLAT ARE INTENDED TO
YMENT OF THE OWNERS OF
ELL AS OWNERS OF ALL THE
LARATION AFORESAID AND
DICATED FOR USE TO THE

SERVED BY THE DEVELOPER
PURSUANT TO ARTICLE IV
SPECIFICALLY DESIGNATED

S OF PARAGRAPH 16 OF THE
ARE EXHIBIT 1 OF THE
INDICATED UPON THE PLAT

PLAT SHALL CONTROL AS TO
LOTS REFLECTED THEREON
S OF THE DECLARATION

E ZONED AS RESIDENTIAL
STRUCTURES MAY BE BUILT
TO THE PROVISIONS,
S AS CONTAINED IN THE
ILLY DETACHED STRUCTURE
A FLOOR SPACE OF LESS

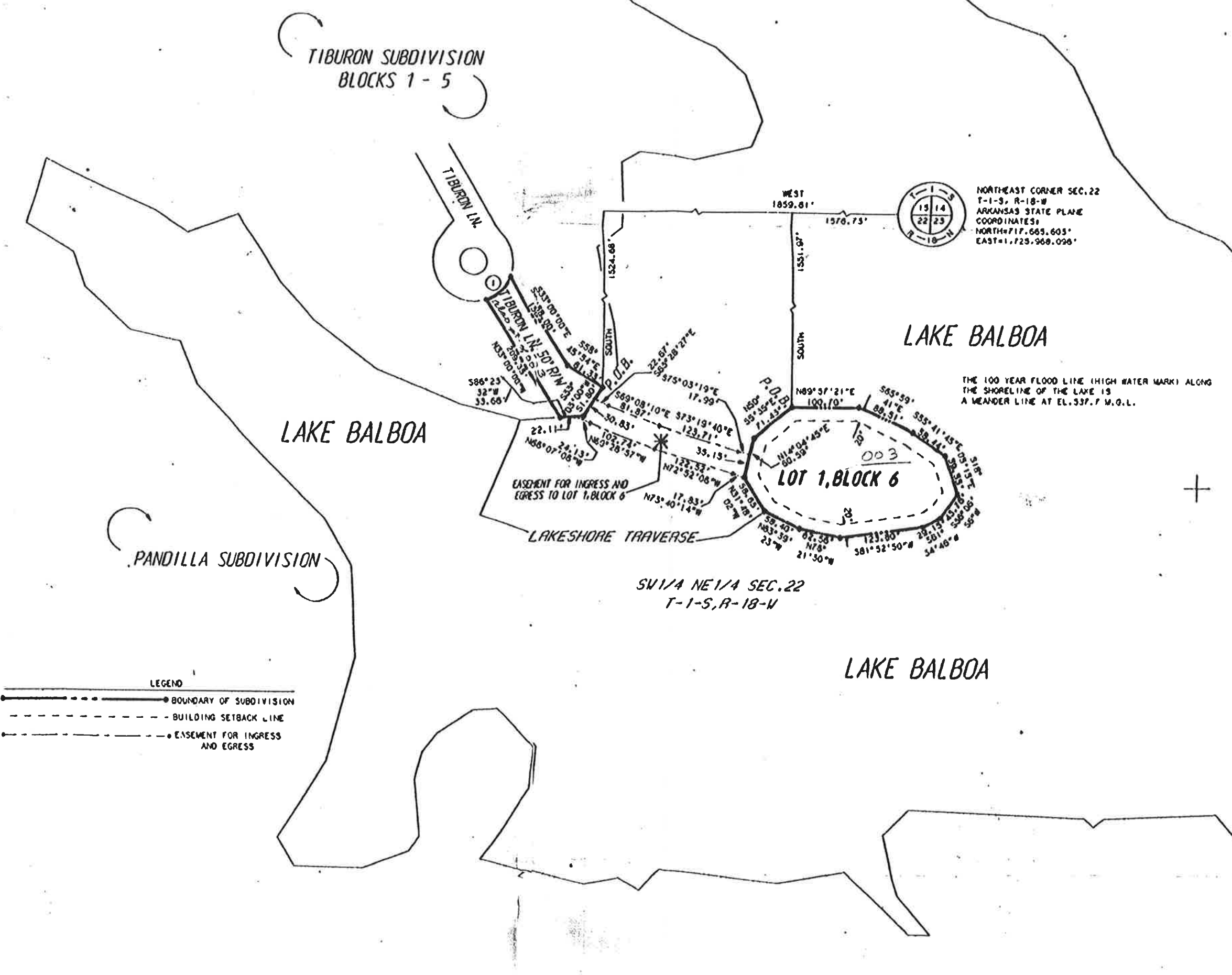
ECTED UPON THE PLAT ARE
E USE OF OWNERS OF LOTS
ARATION AFORESAID OR MAY
ARATION AFORESAID, SUCH
THE GENERAL PUBLIC AND
LEGES THEREO ARE AS SET
N AFORESAID.

S A MEANDER LINE AT A
AN THE HIGHEST PROPOSED
5', AS DETERMINED FROM

LT UPON ANY LOT BETWEEN
PON THE PLAT AND THE
NT, IN WRITING, OF THE
, AND THE ARCHITECTURAL
R MARK REPRESENTS THE
COULD OCCUR ON THE LAKE

NS, HEREBY RESERVES A
AND RIGHT IN, UPON, OVER
ING HEREON, IF ANY, FOR
ING SUCH ROADS, STREETS
NECESSARY OR DESIRABLE
SUCH CUTS, GRADING,
RIDGES, CULVERTS, RAMPS
LLATIONS WHICH IT DEEMS
STREETS OR HIGHWAYS TO
NSPORTATION AND TRAVEL.
OF WAY FOR SUCH ROADS,
THE SOLE DISCRETION OF
PROVIDED, HOWEVER, THAT
NS, WILL USE ITS BEST
TO LESSEN ANY DAMAGE OR
HAVE THERETOFORE BEEN
ER, ITS SUCCESSORS AND
CTED AND SOLE RIGHT AND
TS OR HIGHWAYS AS PUBLIC
EASING THE PRIVILEGES,

CURVE NO. 1 RADIUS 60.00' ARC 52.35' DELTA 049°59'08" CHORD 50.70' CHORD BEARING N47°28'07"E



A PARCEL OF LAND LYING IN THE
OF SECTION 22, TOWNSHIP 1 SOUTH,
GARLAND COUNTY, ARKANSAS, BEING

BEGINNING AT A POINT 1576.73'
OF THE NORTHEAST CORNER OF
COORDINATES OF NORTH 717.665'
THENCE, N 89°37'21" E 100.70'
THENCE, S 33°41'45" E 59.44'
THENCE, S 36°06'56" W 43.78'
THENCE, S 81°52'50" W 123.80'
THENCE, N 63°39'23" W 58.40'
THENCE, N 14°04'45" E 60.59'
TO THE POINT OF BEGINNING, CONTAINING

TOGETHER WITH:
A PARCEL OF LAND LYING IN THE
OF SECTION 22, TOWNSHIP 1 SOUTH,
GARLAND COUNTY, ARKANSAS, BEING
BEGINNING AT A POINT 1859.81'
OF THE NORTHEAST CORNER OF
COORDINATES OF NORTH 717.665'
THENCE, S 33°03'00" W 51.80'
THENCE, N 33°00'00" W 209.35'
OF A 60.00 FOOT RADIUS CURVE
OF N 47°28'07" E 50.70'
THENCE, S 58°45'34" E 81.33'
0.272 ACRES MORE OR LESS.

TOTAL
LOT 1, BLOCK 6
STREET
TOTAL
LENGTH OF RECORD
50 FOOT RIGHT OF WAY

CERTIFICATE OF RECORDING
This document No. 30463
June 14, 1974
Recorded in Plat Book 10
Book of Assurances, Good Book V
Rec'd E. J. J. J.
By J. J. J.

LAND SURVEYOR
I HEREBY CERTIFY THAT THE HEREON
UNDER MY SUPERVISION ON THE
AND THAT CORNERS WERE SET, AS SHOWN

JAMES L. HARPER, M.L.S. NO. 829